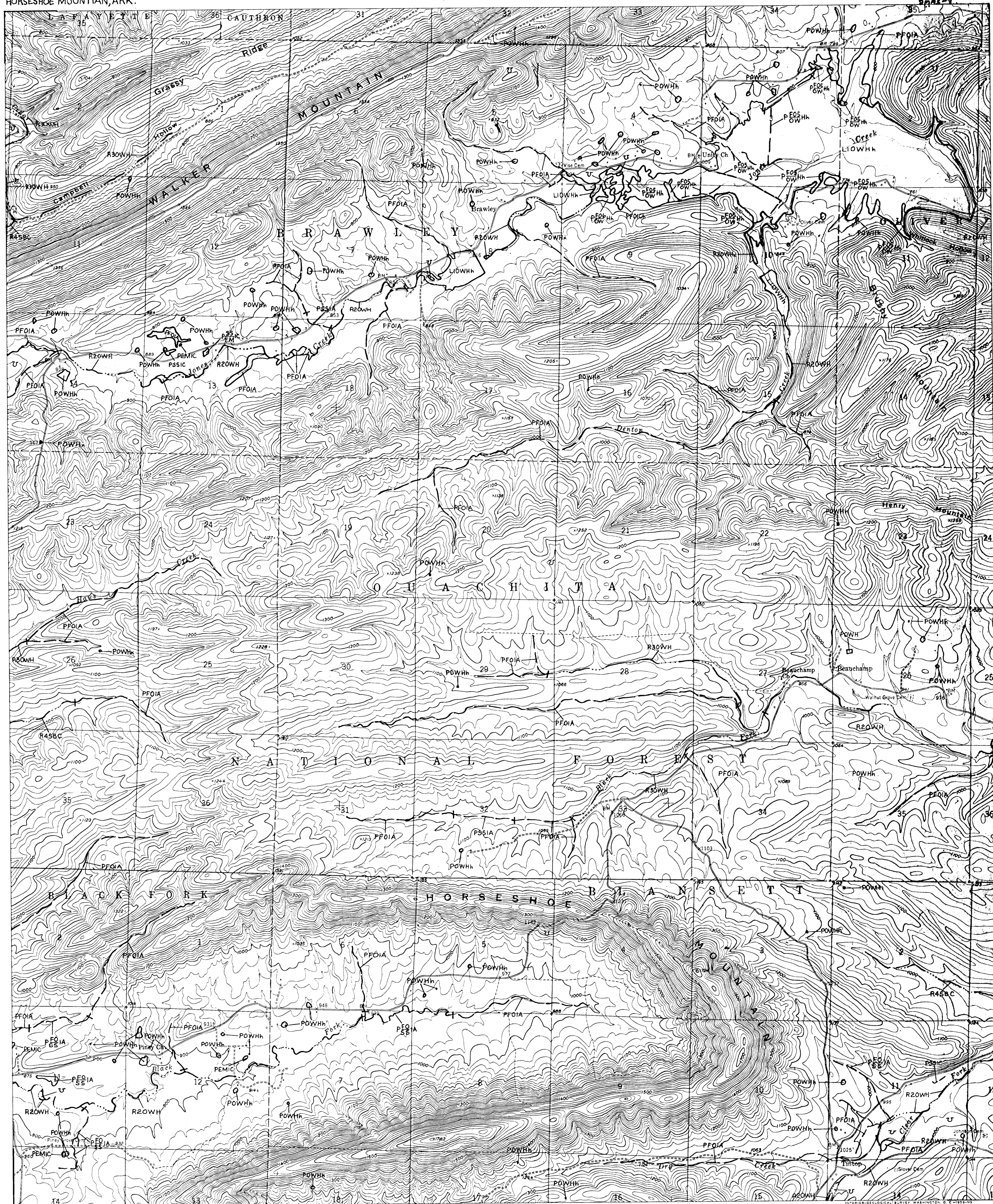


HORSESHOE MOUNTAIN, ARK.



MC ALESTER NE
MENA

DRAFT

HORSESHOE MOUNTAIN, ARK.



U.S. DEPARTMENT OF THE INTERIOR
FISH AND WILDLIFE SERVICE
Prepared by Office of Biological Services
for the National Wetlands Inventory

Other information concerning the wetland resources depicted on this document may be available. For information, contact:

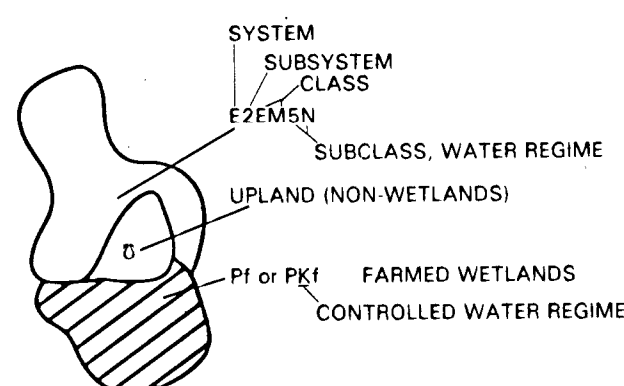
TECHNICAL RESPONSIBILITY	
TASK	NAME DATE
REGIONAL PI QC	
NATIONAL PI QC	
ZTS	E RANDOLPH 7-19-82
ZTS QC	E RANDOLPH 7-19-82
MAP PI QC	J ZIEGLER 8-9-82
ZTS CORRECTION	E. WOOD 8-17-82
CORRECTION CHECK	
F.W.S. ACCEPT	<i>Ammon</i>

SPECIAL NOTE

The distribution was prepared primarily by stereoscopic analysis of high altitude aerial photographs. Wetlands were identified on the photographs based on vegetation, visible hydrology, and geography in accordance with Classification of Wetlands and Deep Water Habitats of the American Wetlands Society (Cowardin *et al.* 1979). The aerial photographs typically reflect conditions during the specific year and season when they were taken. In addition, there is a margin of error inherent in the use of the aerial photographs. The historical nature of the data and the historical analysis of a single site may result in a revision of the wetland boundaries established through photographic interpretation. In addition, some small wetlands and those obscured by dense forest cover may not be included on this

Federal, State and local regulatory agencies with jurisdiction over wetlands may define and describe wetlands in a different manner than that used in this inventory. There is no attempt, in either the design or products of this inventory, to define the limits of proprietary jurisdiction of Federal, State or local government or to establish the proper legal scope of the regulatory programs of government agencies. Persons intending to engage in activities involving modifications within or adjacent to wetland areas should seek the advice of appropriate Federal, State or local agencies concerning specified agency regulatory programs and proprietary jurisdictions that may affect such activities.

SYMBOLGY EXAMPLE



NOTES TO THE USER

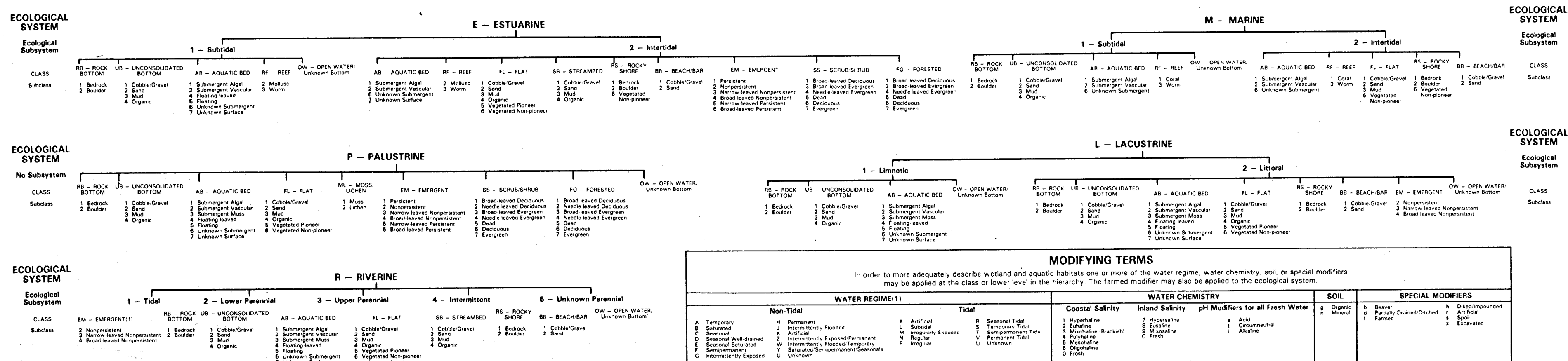
- Wetlands which have been field examined are indicated on the map by an asterisk (*).
- Dominance type (either vegetative or sedentary animal) can be added to the map by the interested user.
- Additions or corrections to the wetlands information displayed on this map are solicited. Please forward such information to the address indicated.
- Some areas designated R4SB, R4SBW, or R4SB. (intermittent streams) may not meet the definition of wetlands.

AERIAL PHOTOGRAPHY

DATE: 3 / / 80
SCALE: 158 000
TYPE: CIR
DATE: / /
SCALE:
TYPE:
DATE: / /
SCALE:
TYPE:

WETLAND LEGEND

U – Primarily represents upland areas, but may include unclassified wetlands such as man-modified areas, non-photo-identifiable areas and/or unintentional omissions.



[¹] EM – EMERGENTS are only found in the Riverine-Tidal and Riverine-Lower Perennial Ecological Subsystem. All other classes are found in all Riverine Ecological Subsystems.

(1) Information on the water regime modifiers found on this legend, but not found in the classification system, may be obtained from the above listed source.