

34.57858°N 96.22926°W  
Normal Elevation: 619 ft

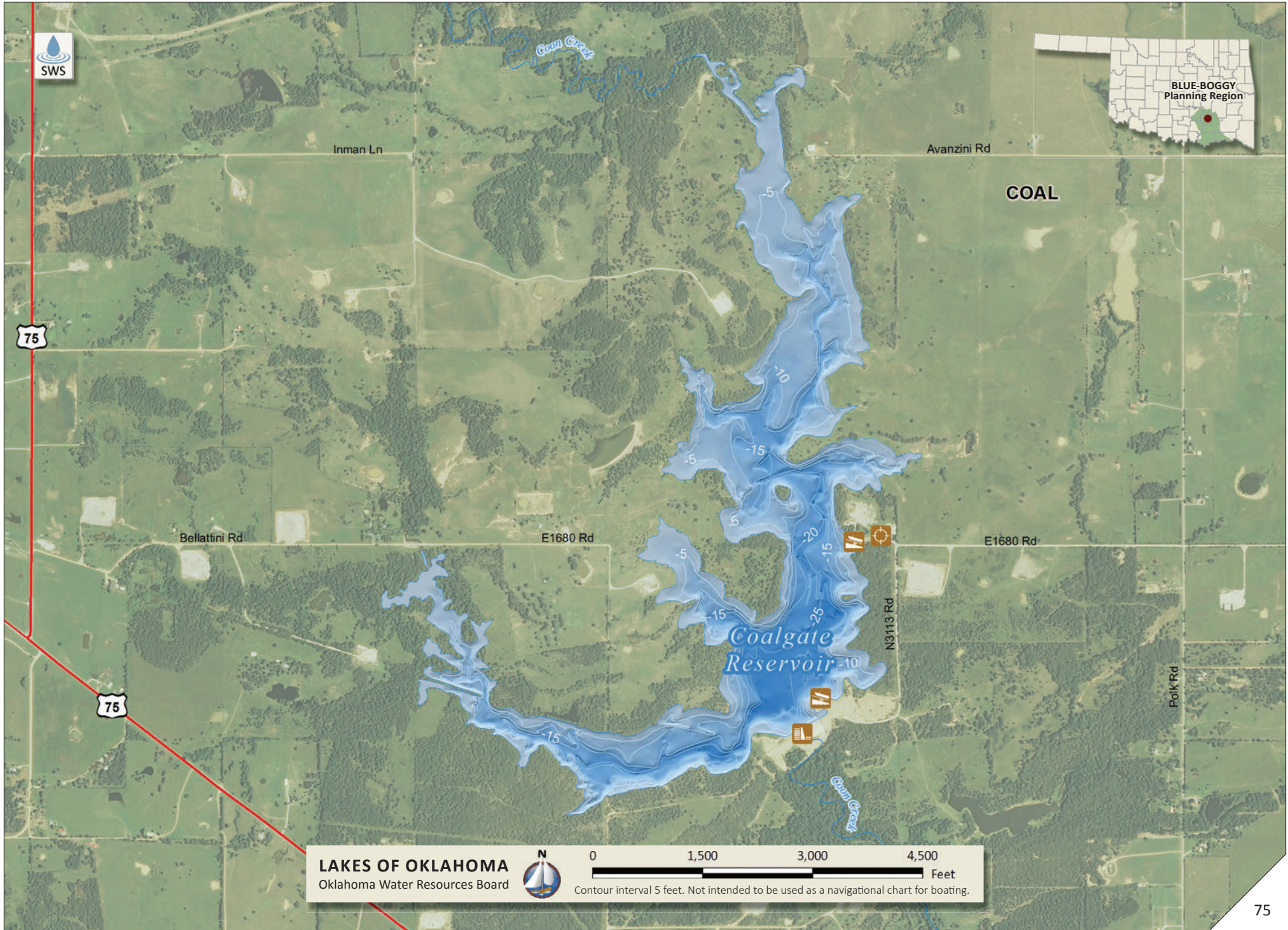
Area: 346 ac  
Shoreline: 13.5 mi

Capacity: 3,466 ac-ft  
Maximum Depth: 30 ft



# Coalgate

CITY OF COALGATE



**LAKES OF OKLAHOMA**  
Oklahoma Water Resources Board



0 1,500 3,000 4,500 Feet  
Contour interval 5 feet. Not intended to be used as a navigational chart for boating.