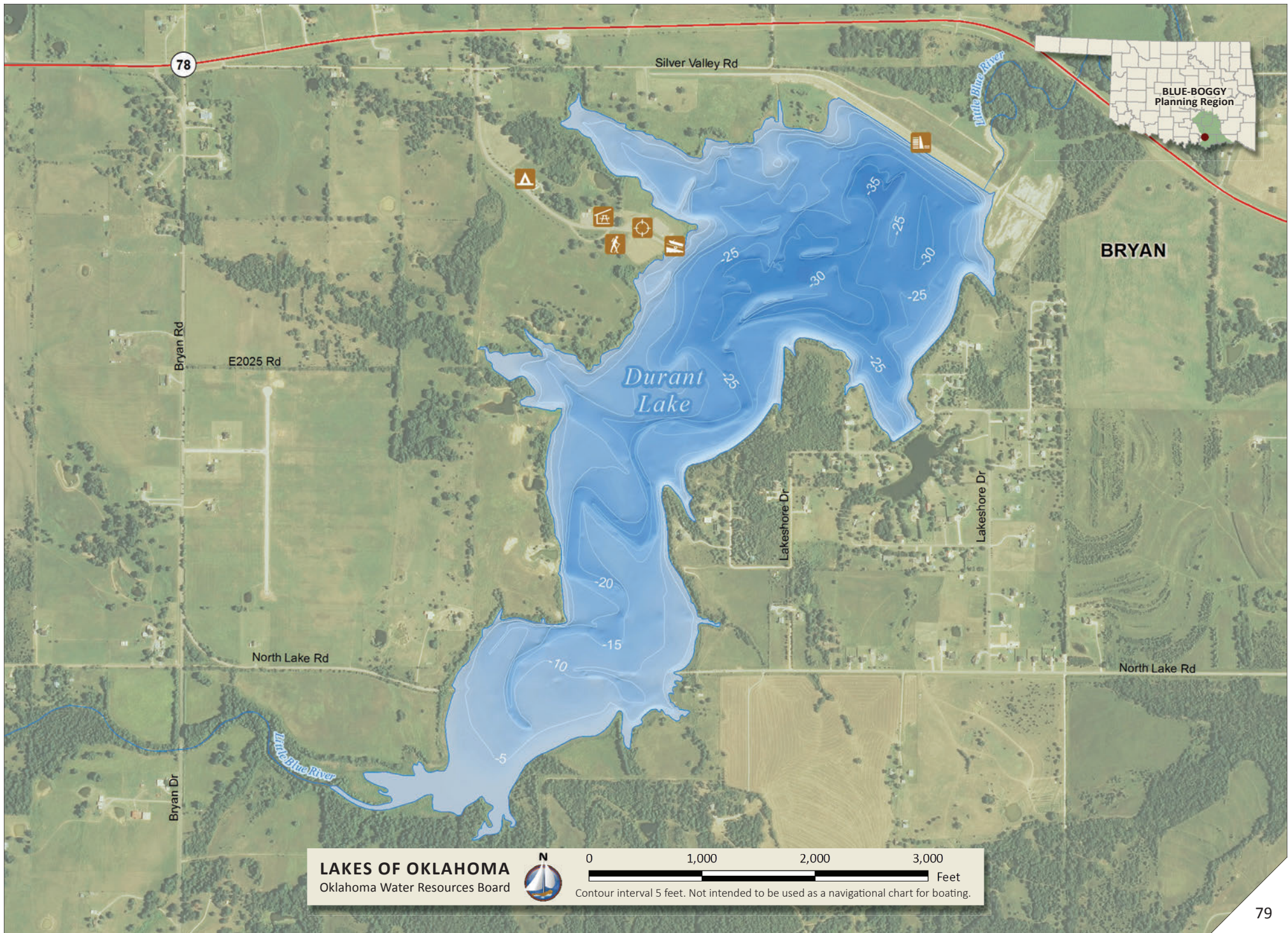


34.08085°N 96.39425°W
Normal Elevation: 624 ft

Area: 278 ac
Shoreline: 6.6 mi

Capacity: 4,309 ac-ft
Maximum Depth: 36.5 ft



LAKES OF OKLAHOMA
Oklahoma Water Resources Board



0 1,000 2,000 3,000 Feet
Contour interval 5 feet. Not intended to be used as a navigational chart for boating.