

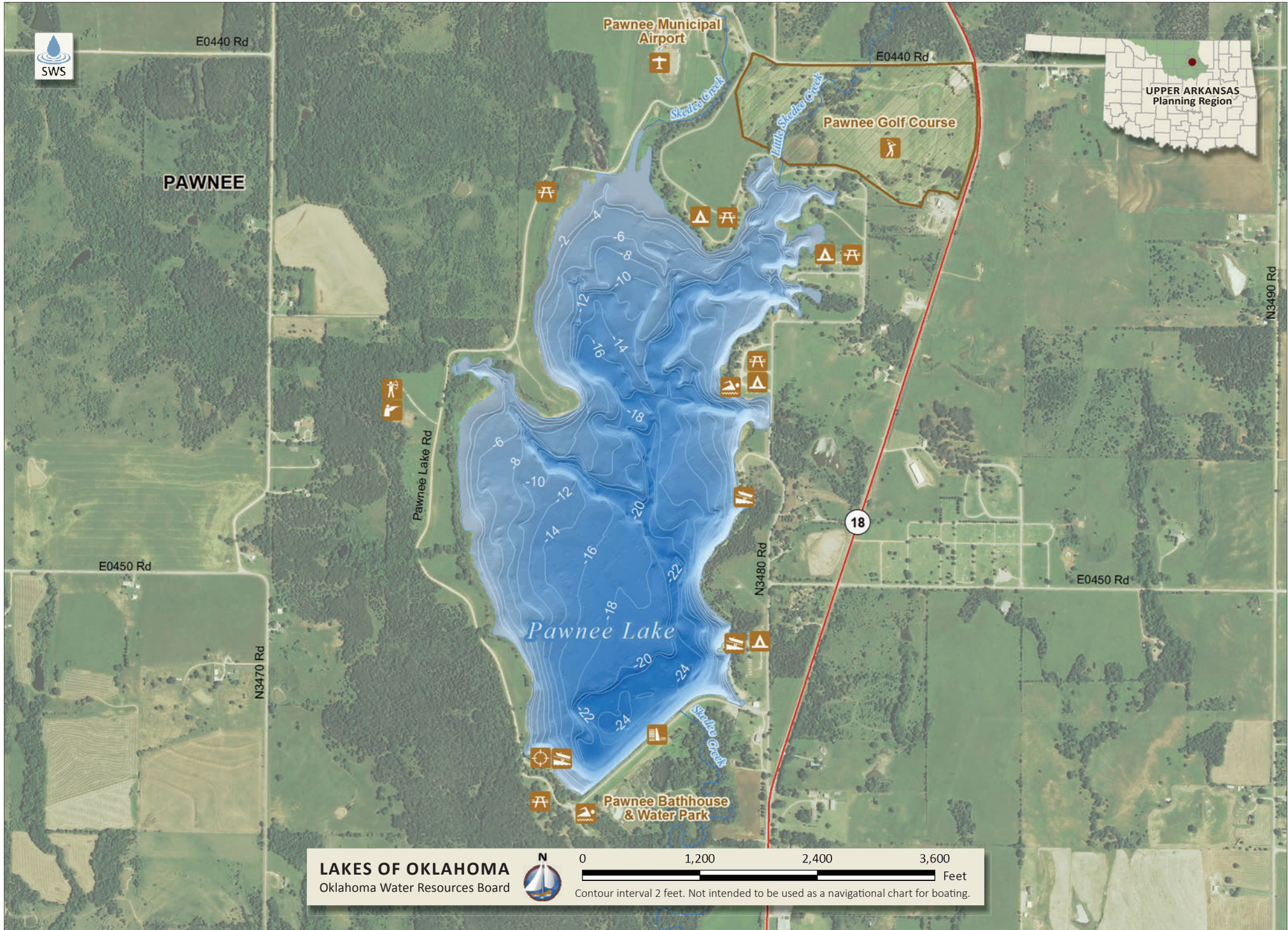
36.35737°N 96.80806°W
Normal Elevation: 867 ft

Area: 310 ac
Shoreline: 5.4 mi

Capacity: 3,533 ac-ft
Maximum Depth: 24.3 ft



Pawnee
CITY OF PAWNEE



LAKEs OF OKLAHOMA
Oklahoma Water Resources Board



0 1,200 2,400 3,600 Feet
Contour interval 2 feet. Not intended to be used as a navigational chart for boating.